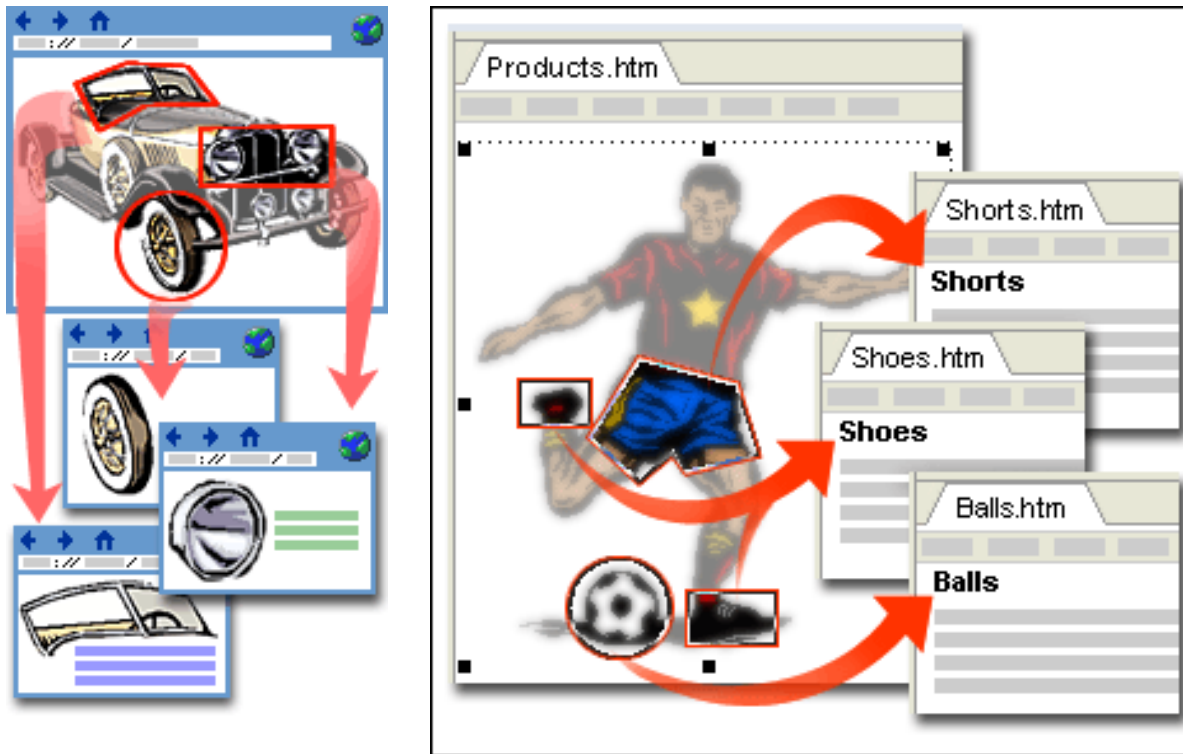


# Create an image map



**Mohammad Hassan Adjigol**

**Jan 2006**



## Create an image map

Have you ever seen a picture which contained several clickable regions? And, depending on the region you clicked, you were taken to a different place on the Web?

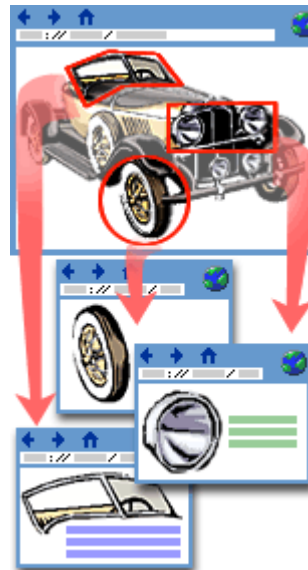
A picture with one or more clickable regions is called an **image map**. Image maps are just one more method you can use to navigate users through your Web site



# Create an image map

A picture with one or more clickable areas or hot spots is called an image map.

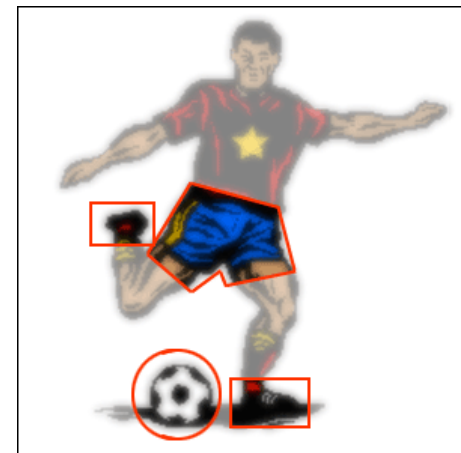
The automobile image map in the illustration includes three hot spots, each of which links to a separate page that provides more information about that specific feature — windshields, headlights, or wheels and tires.



# Hotspots

The clickable areas on an image map are called **hotspots**. The example here has four of them: one around the soccer player's shorts, two around the shoes, and one around the soccer ball.

**Note** Hotspots are visible when working in FrontPage, but when the page is displayed in a browser, they are invisible.





# Create an image map

**To create an image map, do the following:**

- 1- In **Page** view, at the bottom of the document window, click **Design** .
- 2- Click the picture to which you want to add hot spots.
- 3- If the **Pictures** toolbar is hidden, right-click the picture, and then click **Show Pictures Toolbar** on the shortcut menu.
- 4- On the **Pictures** toolbar, click **Rectangular Hotspot** , **Circular Hotspot** , or **Polygonal Hotspot** .



## Create an image map

**To create an image map, do the following:**

5- On the picture, do one of the following:

- **To draw a circle** Click to place the center, and then drag to the size that you want.
- **To draw a rectangle** Click to place one corner, and then drag to the size that you want.
- **To draw a polygon** Click to place each corner of the polygon, and then double-click to finish the shape.

When you release the mouse button, the **Insert Hyperlink** dialog box opens.

6- Locate and select the file that you want the hot spot to link to, and then click **OK**.



## Quiz A

### An image map is:

1- A page of links that has one or more clickable pictures.

2- A bar of links that has one or more clickable areas.

3- A picture that has one or more clickable areas.

Correct. This is an image map.



## Quiz B

**Which of the following toolbars do you use to make hotspots for an image map?**

1- The Drawing toolbar.

2- The Pictures toolbar.

3- The Drawing canvas toolbar.

Yes, that's it. The Pictures toolbar is the right one.